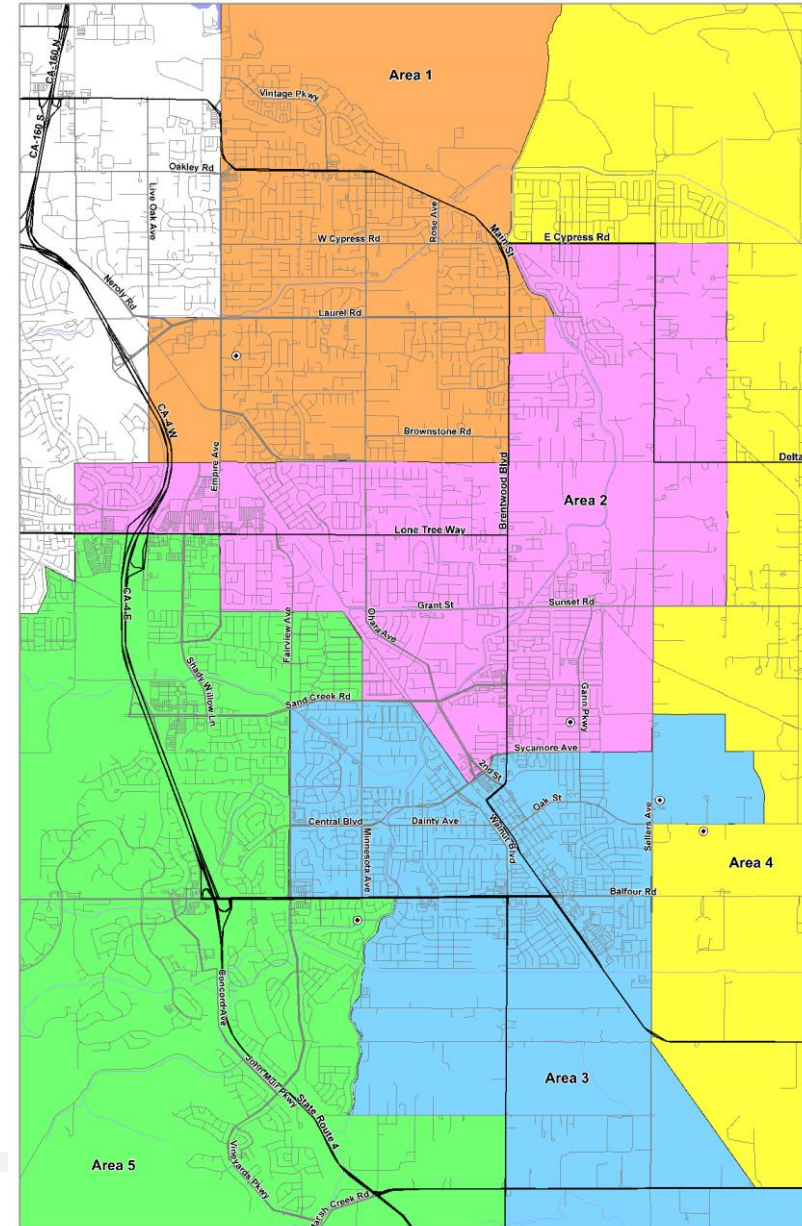
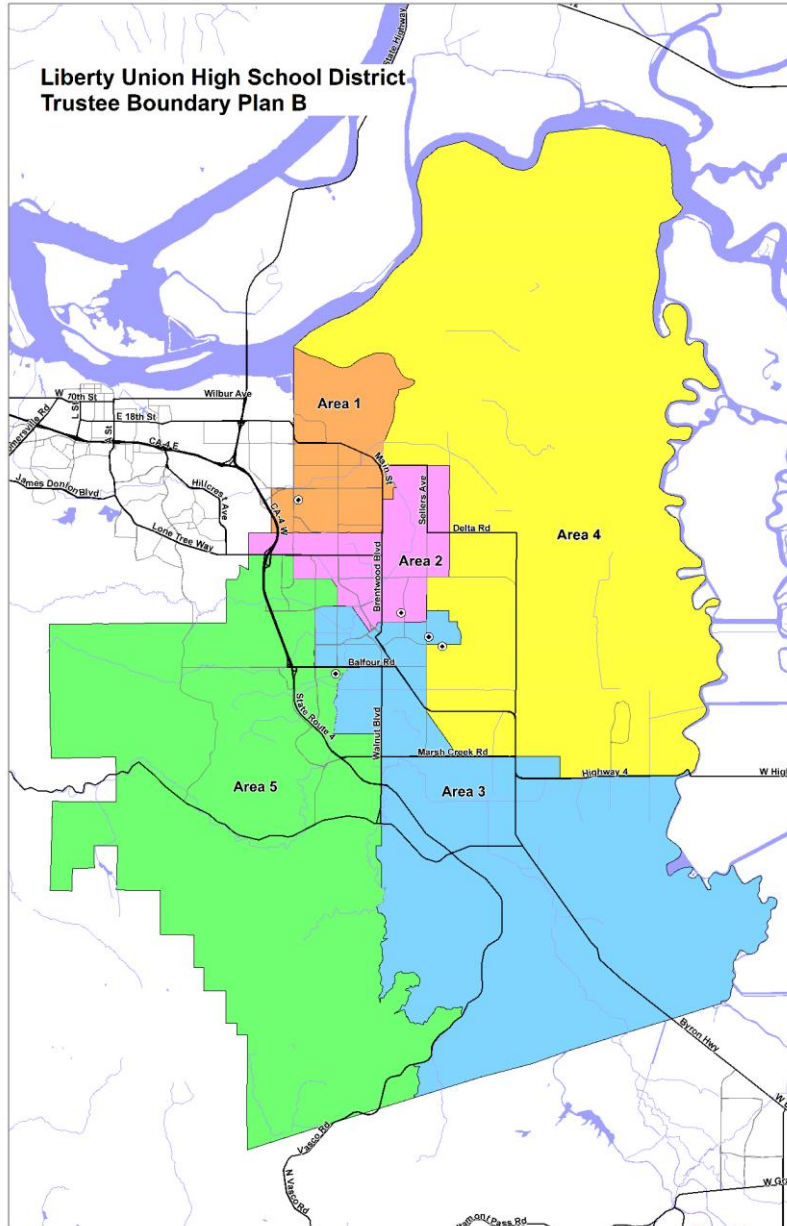


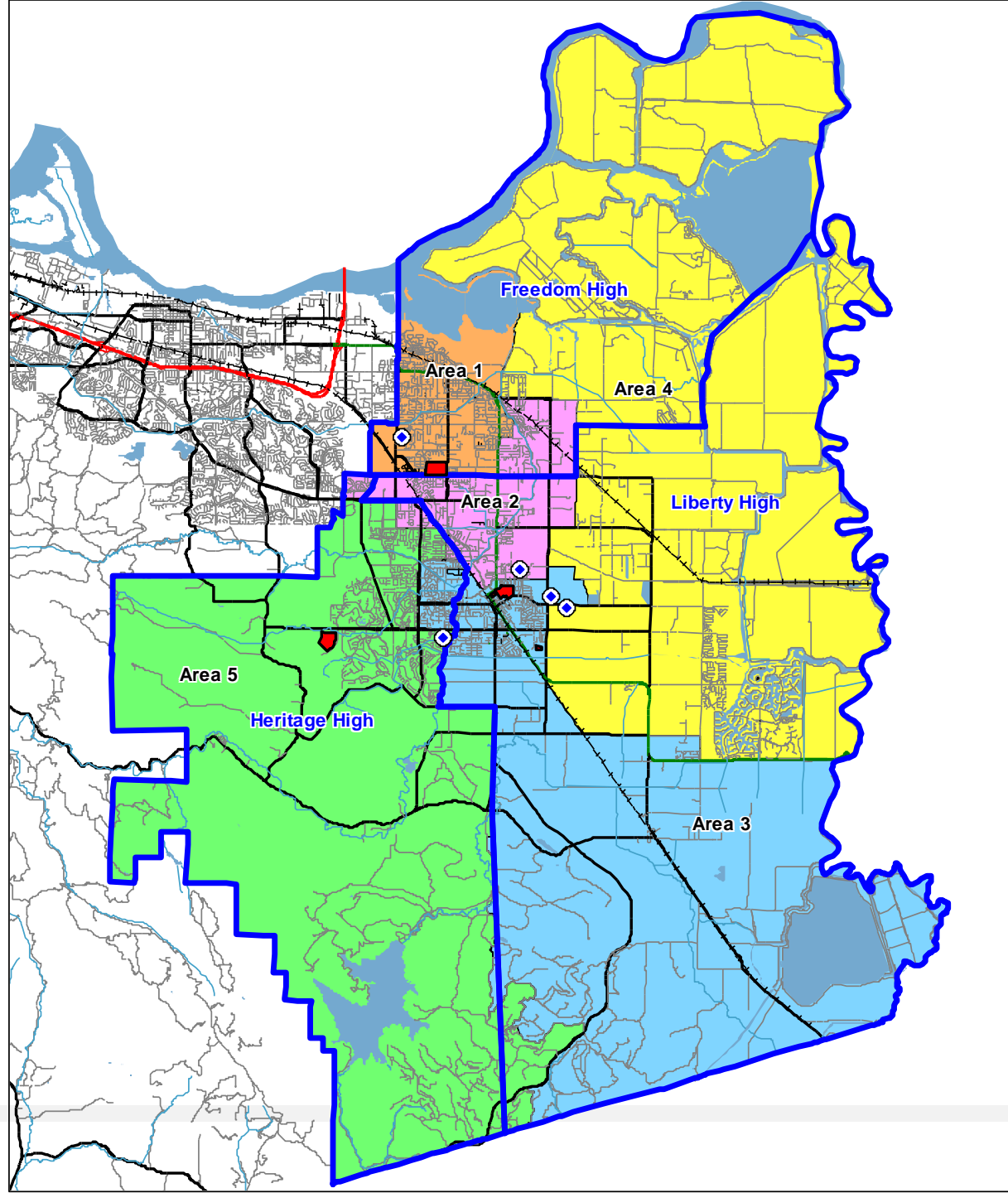
Trustee Area Boundary Map B



Trustee Area Map B

High School Boundaries (blue lines)

School Sites (red)



Total Population and % Deviation, Map B

**Liberty Union High School District
Census 2020 Data Summary by Trustee Areas
Plan B**

Total Population Statistics

| Area: | 1 | 2 | 3 | 4 | 5 | Total |
|-----------------|--------|--------|--------|--------|--------|----------------|
| Trustees: | 1 | 1 | 1 | 1 | 1 | 5 |
| | | | | | | |
| Population | 25,660 | 25,478 | 25,876 | 25,501 | 25,258 | 127,773 |
| % of Total Pop. | 20.08% | 19.94% | 20.25% | 19.96% | 19.77% | |
| | | | | | | |
| Ideal Pop. | 25,555 | 25,555 | 25,555 | 25,555 | 25,555 | |
| Ideal Pop. % | 20.00% | 20.00% | 20.00% | 20.00% | 20.00% | |
| | | | | | | Peak |
| Deviation | 105 | -77 | 321 | -54 | -297 | 618 |
| Dev % | 0.41% | -0.30% | 1.26% | -0.21% | -1.16% | 2.42% |

Peak Deviation may not exceed 10%.

Demographics by Trustee Area, Map B

Census Data by Trustee Area including Racial/Ethnic details
Plan B

| Area: | 1 | % | 2 | % | 3 | % | 4 | % | 5 | % | Total | % |
|-------------------------|--------------|--------|--------------|--------|--------------|--------|--------------|--------|--------------|--------|---------------|--------|
| Trustees: | 1 | | 1 | | 1 | | 1 | | 1 | | 5 | |
| Total Population | 25660 | | 25478 | | 25876 | | 25501 | | 25258 | | 127773 | |
| Hispanic | 9818 | 38.26% | 8903 | 34.94% | 8127 | 31.41% | 5603 | 21.97% | 4832 | 19.13% | 37283 | 29.18% |
| White - NH | 10484 | 40.86% | 8933 | 35.06% | 11830 | 45.72% | 14070 | 55.17% | 13370 | 52.93% | 58687 | 45.93% |
| Black - NH | 1458 | 5.68% | 2257 | 8.86% | 1384 | 5.35% | 1766 | 6.93% | 1631 | 6.46% | 8496 | 6.65% |
| American Indian - NH | 71 | 0.28% | 70 | 0.27% | 75 | 0.29% | 69 | 0.27% | 55 | 0.22% | 340 | 0.27% |
| Asian - NH | 1945 | 7.58% | 3526 | 13.84% | 2490 | 9.62% | 2052 | 8.05% | 3521 | 13.94% | 13534 | 10.59% |
| Pacific Islander - NH | 130 | 0.51% | 144 | 0.57% | 111 | 0.43% | 134 | 0.53% | 96 | 0.38% | 615 | 0.48% |
| Other - NH | 159 | 0.62% | 149 | 0.58% | 172 | 0.66% | 129 | 0.51% | 135 | 0.53% | 744 | 0.58% |
| Multiple Races - NH | 1595 | 6.22% | 1496 | 5.87% | 1687 | 6.52% | 1678 | 6.58% | 1618 | 6.41% | 8074 | 6.32% |
| 18+ Population | 19008 | | 18254 | | 18760 | | 19495 | | 19551 | | 95068 | |
| Hispanic | 6571 | 34.57% | 6018 | 32.97% | 5445 | 29.02% | 3738 | 19.17% | 3311 | 16.94% | 25083 | 26.38% |
| White - NH | 8495 | 44.69% | 6818 | 37.35% | 9235 | 49.23% | 11534 | 59.16% | 11180 | 57.18% | 47262 | 49.71% |
| Black - NH | 1072 | 5.64% | 1622 | 8.89% | 1003 | 5.35% | 1278 | 6.56% | 1228 | 6.28% | 6203 | 6.52% |
| American Indian - NH | 56 | 0.29% | 56 | 0.31% | 50 | 0.27% | 58 | 0.30% | 39 | 0.20% | 259 | 0.27% |
| Asian - NH | 1522 | 5.93% | 2672 | 10.49% | 1866 | 7.21% | 1664 | 6.53% | 2655 | 10.51% | 10379 | 8.12% |
| Pacific Islander - NH | 108 | 0.57% | 122 | 0.67% | 88 | 0.47% | 109 | 0.56% | 70 | 0.36% | 497 | 0.52% |
| Other - NH | 112 | 0.59% | 89 | 0.49% | 116 | 0.62% | 89 | 0.46% | 92 | 0.47% | 498 | 0.52% |
| Multiple Races - NH | 1072 | 5.64% | 857 | 4.69% | 957 | 5.10% | 1025 | 5.26% | 976 | 4.99% | 4887 | 5.14% |
| CVAP | 16513 | | 15014 | | 16963 | | 17667 | | 19444 | | 85601 | |
| Hispanic | 4130 | 25.01% | 4001 | 26.65% | 4049 | 23.87% | 2863 | 16.21% | 2922 | 15.03% | 17965 | 20.99% |
| White - NH | 8646 | 52.36% | 6989 | 46.55% | 9550 | 56.30% | 12189 | 68.99% | 12444 | 64.00% | 49818 | 58.20% |
| Black - NH | 1251 | 7.58% | 1542 | 10.27% | 1275 | 7.52% | 948 | 5.37% | 1492 | 7.67% | 6508 | 7.60% |
| American Indian - NH | 89 | 0.54% | 69 | 0.46% | 152 | 0.90% | 90 | 0.51% | 41 | 0.21% | 441 | 0.52% |
| Asian - NH | 1194 | 7.23% | 1945 | 12.95% | 1076 | 6.34% | 1064 | 6.02% | 1837 | 9.45% | 7116 | 8.31% |
| Pacific Islander - NH | 167 | 1.01% | 31 | 0.21% | 104 | 0.61% | 56 | 0.32% | 127 | 0.65% | 485 | 0.57% |
| Multiple Races - NH | 1036 | 6.27% | 437 | 2.91% | 757 | 4.46% | 457 | 2.59% | 581 | 2.99% | 3268 | 3.82% |

NH = Not of Hispanic Origin
CVAP = Citizen Voting Age Population